

PRE LF

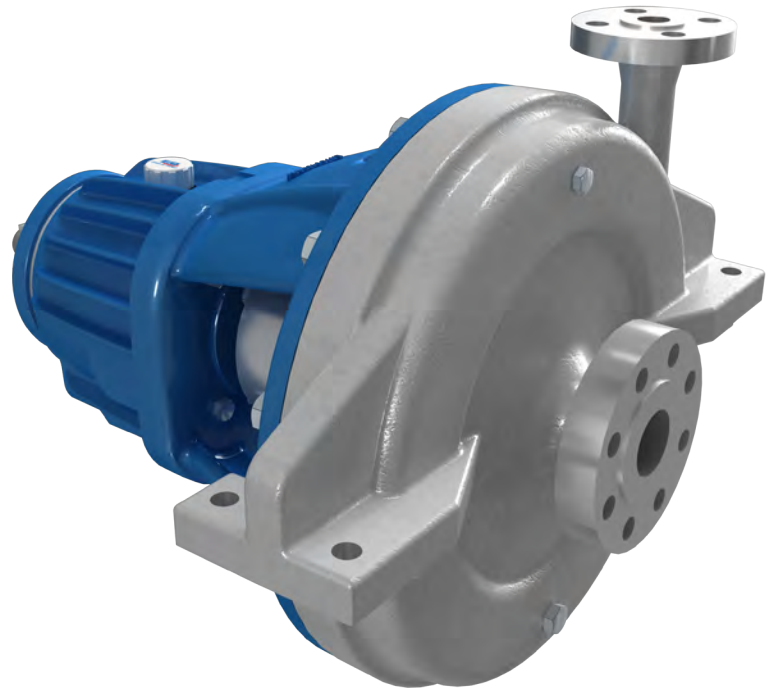
API 610 - OH2

FOR LOW-FLOW AND
HIGH HEAD REQUIREMENTS

FOR CLEAR, TOXIC, CORROSIVE, FLAMMABLE, HOT LIQUIDS.

Design:

- / Flanges per ANSI B16.5 - #300 - PN50 - Other flange standards upon request.
- / Metal to metal casing fit providing the right O-Ring compression and a perfect alignment
- / Different impeller and casing machining types for a same size of pump ensure operation near the BEP (best efficiency point) with large operating range.
- / Shaft sealed by cartridge mechanical seal + API flushing plans
- / Efficient airfins cooled bearing housings
- / Bearing frame has a large oil capacity to provide an optimum bearing lubrication
- / Adjustable bearing carrier allows for easy impeller clearance adjustment in order to maintain the pump performance
- / Permanent bearing protection by labyrinth seal
- / Accessible seal area
- / High radial load roller bearing
- / Centre line mounted pump casing and base plate complying with API610 standards.
- / Extra heavy shaft providing a strong reliable power transmission.
- / Casing drain as per API610
- / Bearing frame has a large oil capacity to provide optimum bearing lubrication
- / Impeller manufactured with the investment casting process ensuring an optimal surface accuracy and high efficiency w



Performances:

- / Capacity : up to 20 m³/h (88 US gpm)
- / Total head : up to 300 m (985 ft)
- / Maximum operating pressure : 60 bar (870 PSI)
- / Temperature operating range :
from -90 to 400 °C (-130 to 752 °F)
- / Maximum speed : 3,600 rpm at 60 Hz
- / Higher capacities and heads upon request

Standard materials:

- / Standard: 26/5/2 + Cu stainless steel, FT25 cast iron
- / Other materials upon request: nodular cast iron, hastelloy, titanium, inconel,...

Industrial applications:

- / Petrochemical industry
- / Oil and Gas
- / Offshore
- / General industry

