

Horizontal multistage barrel pump

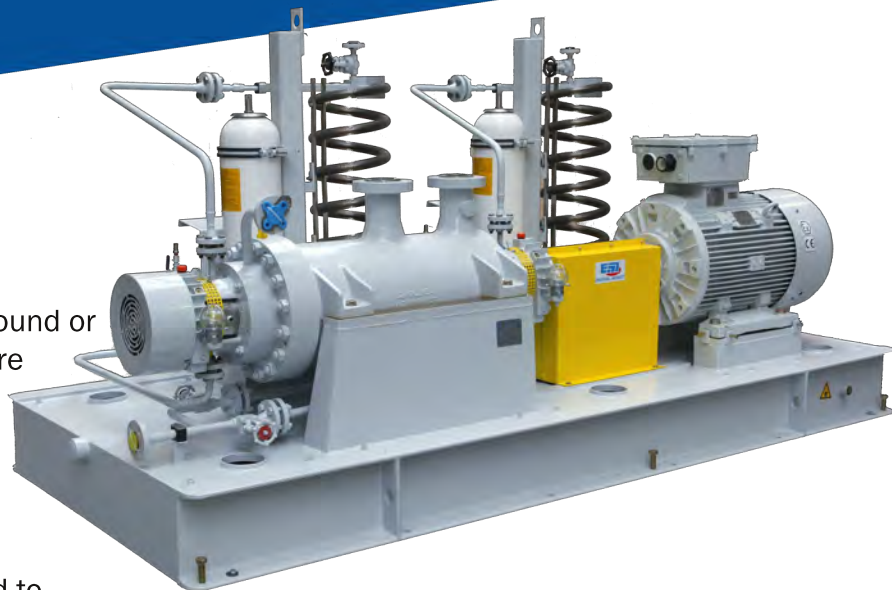
FOR LIQUEFIED GAS, HYDROCARBONS

MNF

API 610 (BB5)

Design :

- / Construction with barrel supported on the ground or centerline depending on pumping temperature
- / Each stage contain 5 parts : closed impeller, diffuser, the interstage ring section and the wear rings
- / First stage impeller can be specially designed to reduce the NPSH required
- / Type of bearing depends on balancing system : dynamic or fixed balancing system
- / Sealing system : cartridge mechanical seals following API682 standards
- / Flanges according to customer's specification
- / Barrel is tested at 1.5x maximal discharge pressure



Performances :

- / Capacity : up to 400 m³/h (1,761 US gpm)
- / Total head : up to 1200 m (3,940 ft)
- / Maximum operating pressure : 100 bar (1,450 PSI)
- / Temperature operating range : up to 425 °C (392 °F)
- / Higher design pressure upon request

Standard materials:

- / Impeller and diffusor in chrome steel, barrel in steel and shaft in steel : S6
- / Other materials available upon request: A8, D1

Industrial applications :

- / Petrochemical applications
- / Liquefied gas
- / Injection pump
- / BFW pump
- / Reverse osmosis
- / Any pumping of a clean fluid under high pressure

