

Pumping solutions for desalination and water treatment



/ Making Progress Together

 **Ensival Moret**
A Moret Industries Company



www.ensival-moret.com



Ensival Moret Fapmo Pumps

/ Ensival Moret Fapmo has more than 100 years of proven design and manufacturing experience in providing specially engineered pumps for critical applications in navy and desalination. This strong experience has resulted in Ensival Moret Fapmo becoming a global supplier of choice for these engineered pumps.



Pump performance is fully confirmed in our state of art hydraulic test facilities

/ Ensival Moret Fapmo works closely with its customers to guarantee a high level of technical assistance. Our customers benefit directly from the company's diverse application and project experience. This collaboration helps to ensure the best solutions are made available and projects achieve the highest level of success.

/ Component packaging

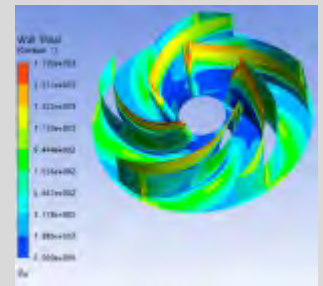
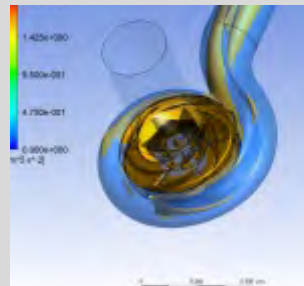
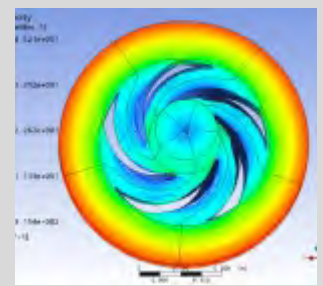
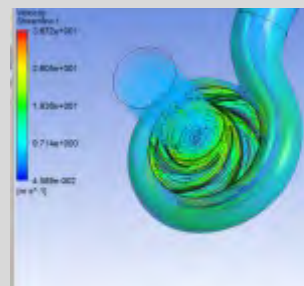
To ensure project success in the field, Ensival Moret Fapmo closely collaborates with its suppliers for critical components (electrical motors, mechanical sealing, couplings, etc.) to provide a highly reliable pump unit optimized for your process.

/ A partner for your projects

Ensival Moret Fapmo takes full responsibility for the complete pump system. Offering a highly engineered design, quality manufacturing and focused customer support all lead to equipment providing the lowest total cost of ownership.

/ Ensival Moret Fapmo continuously invests in R&D tools:

Experienced engineers utilize the latest softwares to optimize pump and system design with computational fluid dynamics simulations (backed by empirical tests), static and dynamic stress and thermal analyses.





Ensival Moret : Your Partner for Desalination

Ensival Moret Experience

MANUFACTURING RANGE

- Water source intake pumps (Vertical turbine pumps / Axially split casing pumps)
- High pressure membrane feed pumps (Ring section, multistage pump) and booster pumps.
- Process pumps and high pressure pumps for all auxiliary services (Product transfer, filter backwash, CIP flushing, brine, distillate, condensate...).

KNOW-HOW

- Temperature : up to +250°C.
- Pressure : 70 bar. (higher pressure upon request)
- Expertise : Low NPSH, Corrosion resistant Metallurgy, tailor-made pumping solutions,
- Metallurgy : Cast iron, Stainless steel, Duplex and Super-duplex

MAIN CUSTOMERS

ALFA LAVAL - AQUATECH - CH2MHILL - DOOSAN - ENTROPIE - FISIA - IDE - OTV - SIDEM - VEOLIA - WABAG

Reverse Osmosis



Multiple Effect Distillation



Multiple Stage Flash Processes



Some Ensival Moret's Projects





Proven expertise and experience

The comprehensive line of Ensival Moret Fapmo pump products featuring high efficiency and advanced material technology can be a major factor in achieving success in pure water creation. Detailed systems knowledge of the different desalination process (MED - MSF - RO) along with a full menu of technical support and services is available wherever and whenever needed.

Water Source Intake Pumps:

As seawater intake is one of the toughest applications in desalination, these pumps require careful designs and material selections to achieve the highest reliable and corrosion resistant. They must also have the versatility to fit various intake methods.

Reverse Osmosis desalination:

The heart of the RO system is the high pressure membrane feed pump. Ensival Moret Fapmo offers high efficiency membrane feed pumps, utilizing the latest technologies, including Computation Fluid Dynamics to provide the best system performance. Ensival Moret Fapmo offers both radial split case and ring section type pumps for this service.

Auxiliary services:

Ensival Moret Fapmo provides you with the best suited solutions for all your auxiliary services according process requirements. Ensival Moret Fapmo pumps guarantee to your installation high reliability and efficiency.

Materials

Our standards are ASTM A 890 Gr-1B or DIN 1.4517. This range of materials covers the whole range of services in desalination applications. This range of material is completed by stronger Duplex (ASTM A 890 Gr-3A), Super Duplex (ASTM A 890 Gr-5A, ASTM A 890 Gr-6A, ASTM A 351 CK3MCuN), as well as typical Stainless Steel (ASTM A351 CF3M) or cast Iron for non-critical applications in terms of corrosion.

Submerged bearing and wear rings are made of PEEK.

Products : a complete package solutions



High pressure multistage pump

- Flow : up to 1,300 m³/h
- Head : up to 760 m
- High efficiency



Process pump

- Flow : up to 6,500 m³/h
- Head : up to 160 m
- Low NPSH and high efficiency



Vertical mixed flow pump

- Flow : up to 10,000 m³/h
- Head : up to 350 m
- Robust and reliable design



Axially split casing pump

- Flow : up to 15,000 m³/h
- Head : up to 160 m
- Low NPSH and high flow rate



Booster process pump

- Flow : up to 4,500 m³/h
- Head : up to 320 m
- High suction pressure



High pressure radially split pump

- Flow : up to 2,800 m³/h
- Head : up to 320 m
- High efficiency



Axial flow pump

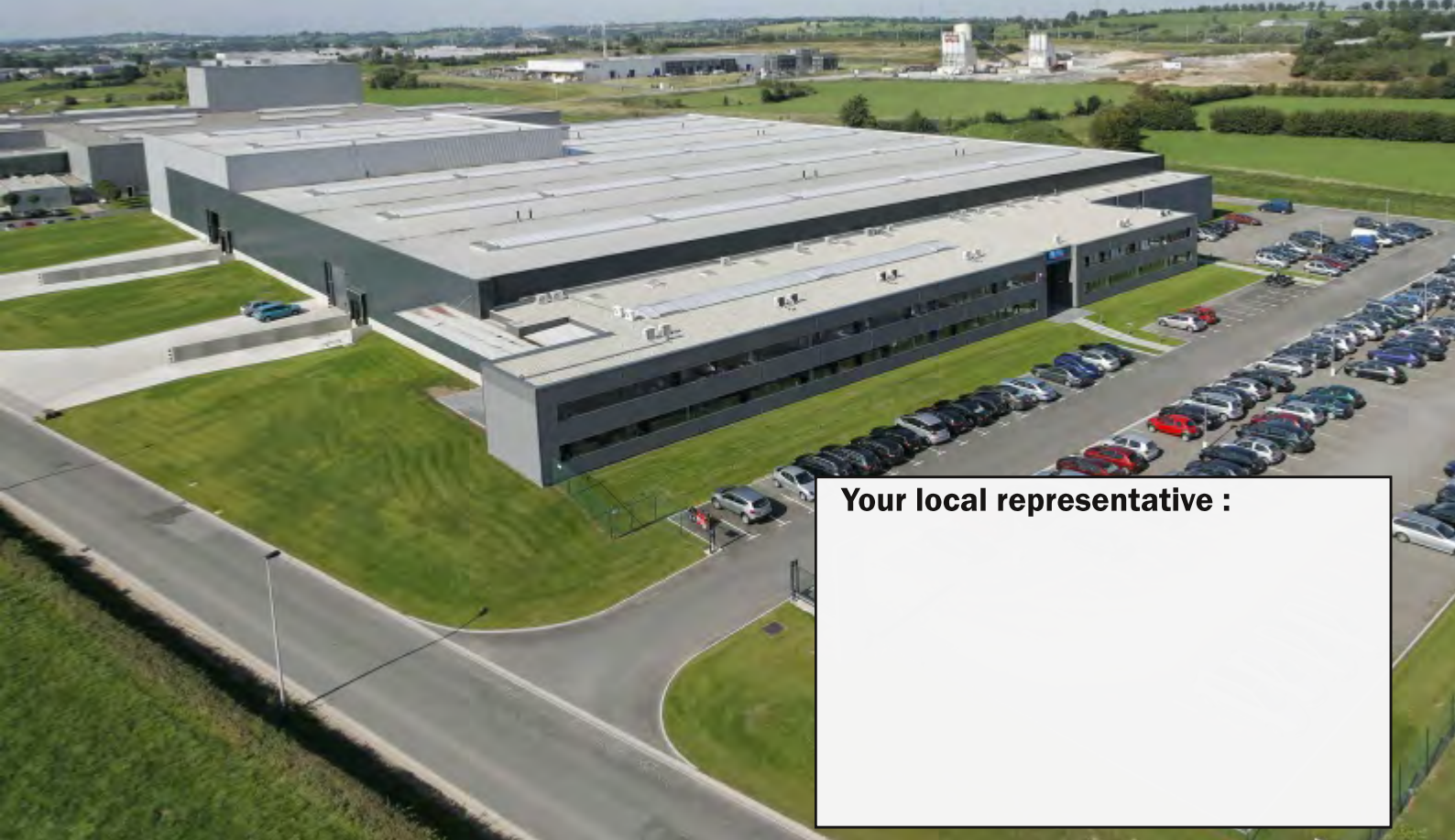
- Flow : up to 30,000 m³/h
- Head : up to 8 m
- Large flow rate



Long shaft vertical pump

- Flow : up to 3,300 m³/h
- Head : up to 100 m
- Simple and flexible design

Making Progress Together



Your local representative :

Our dedicated team for desalination and water applications will be pleased to answer your information requests and inquiries.

/ Ensival Moret in the world:

/ Your expertise team for desalination and water treatment:



ENSIVAL MORET FAPMO
35, 37 rue Roger Salengro
BP 59 - 62230 OUTREAU - FRANCE
Phone: +33 (0) 321 100 121
Fax: +33 (0) 321 804 688
Email: fapmo@em-pumps.com

ENSIVAL MORET (SHANGHAI) CO., LTD.
磨锐泵（上海）有限公司
No. 1590, Li An Road, Minhang District,
Shanghai 201199 - P.R. CHINA
Tel: +86 (0)21 5488 9599
Fax: +86 (0) 21 5488 9399
Email: emshanghai@ensival-moret.cn

/ Main references:

